



# WARRIOR TRUCK BEDS SENTINEL STEEL SKIRTED TRUCK BED



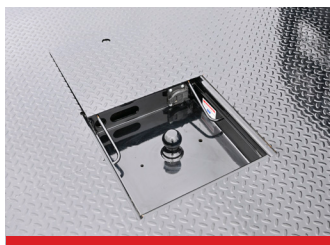
<b>BED</b>	Steel Full Headache Rack
<b>SIZES</b>	84", 8'-6", 9'-4", 11'-4"
<b>HEADACHE RACK</b>	One-Piece Steel Tube with Flat Bars
<b>DECK</b>	11-Gauge Steel Tread Plate
<b>SIDE RAILS</b>	3/8" x 2" Steel Side Rails with Stake Pockets
<b>FRAME RAILS</b>	4" Steel Channel
<b>CROSSMEMBERS</b>	3" Steel Channel
<b>GOOSENECK HITCH</b>	30K lb. B&W Hitch with Welded Ball
<b>TOOLBOXES</b>	(2) Standard Integrated Toolboxes
<b>FUEL FILL</b>	Angled
<b>REAR SKIRT</b>	14" Rear Back with Tapered Corners
<b>REAR LIGHTING</b>	LED Oval
<b>MARKER LIGHTING</b>	DOT Approved LED Bullet



OEM FACTORY HITCH



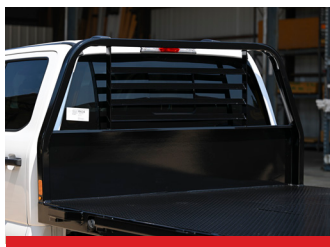
3/8" x 2" SIDE RAILS



30K LB. B&W GN HITCH



(2) INTEGRATED TOOLBOXES



ONE-PIECE HEADACHE RACK



14" TAIL SKIRT W/TAPER